

Installation Manual – Swim Jet



What is the parts breakdown of the Swim Jet?

1 Air button for water pump x1

2 Air Adjusting x1

3 Air Button for Water Light x1

4 Threaded Plug for Lid x1

5 M5*20mm Screws x4

6 Lid x1

7 LED spa light 1w, 12v

8 Support Frame x1

9 Water Jet x1

10 D12mm x 8mm x 40mm Air Adjusting Hose x2

11 D5mm x 3mm x 3M Transparent Hose x2

12 M6 x 20 Screw (AISI316) x4

13 Water Jet Fixed Pipe x1

14 Vinyl & Fiberglass Pool Fittings (2 x rubber gaskets and faceplate)

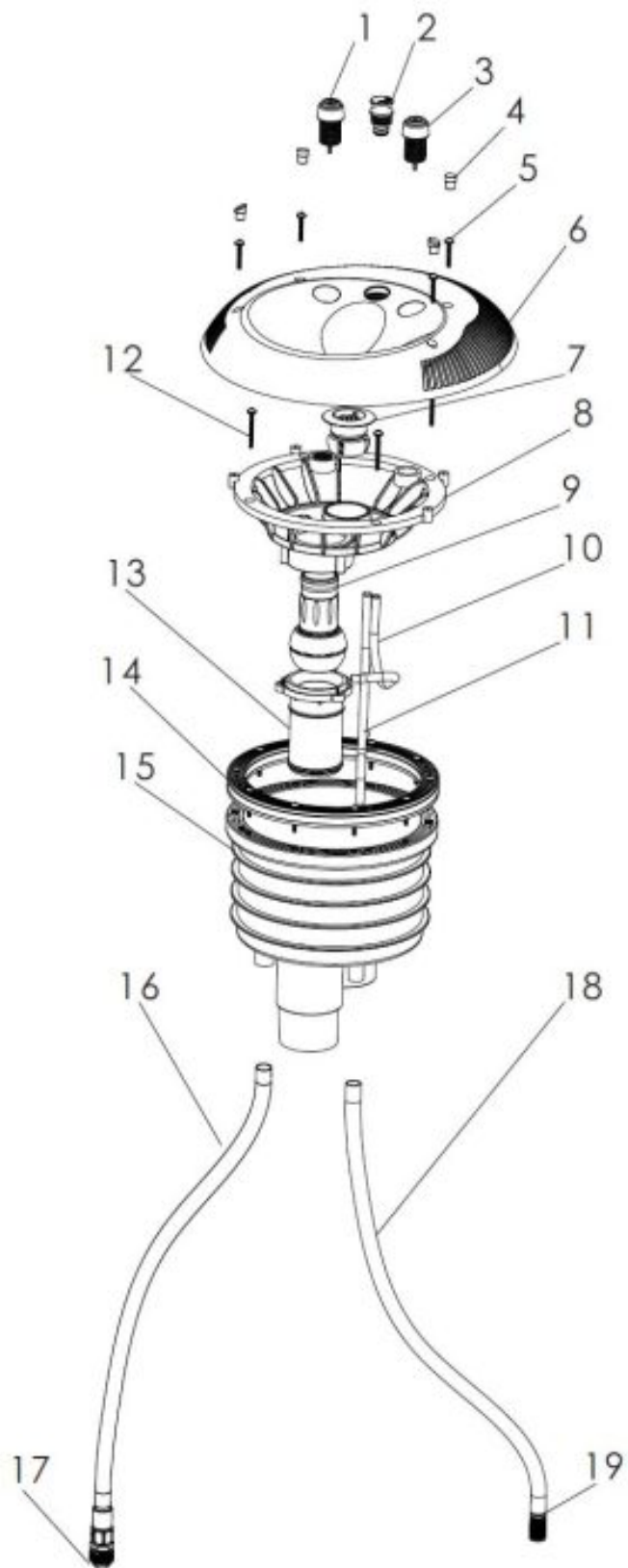
15 Swim Jet Body x1

16 Conduit for Light Cable and Air Hose x1

17 Cable Grand x1

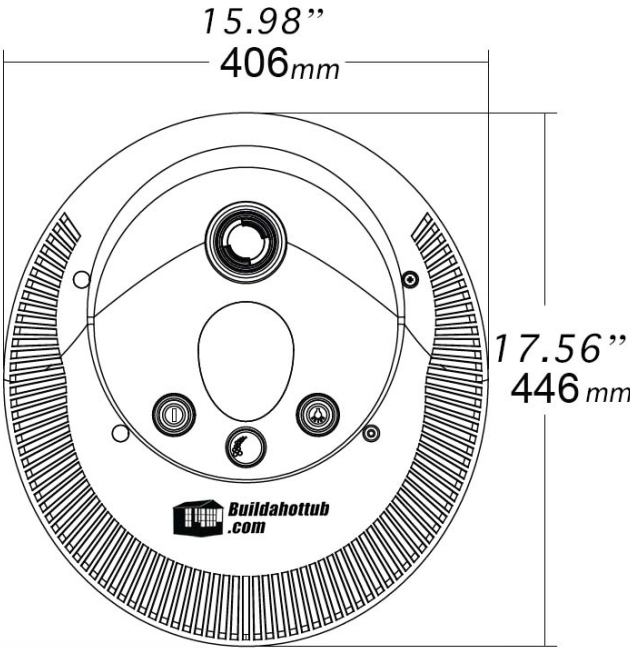
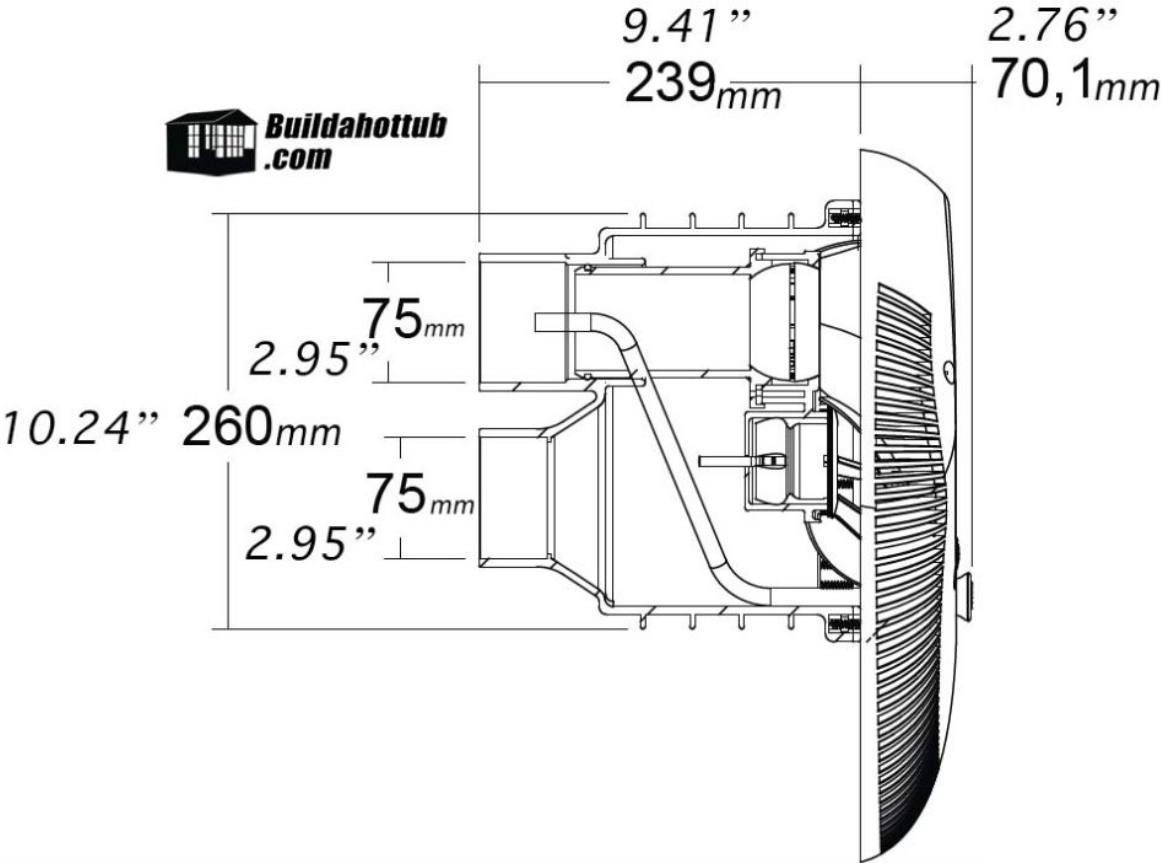
18 Exhaust Hose x1

19 Venting Plug x1



**Buildahottub
.com**

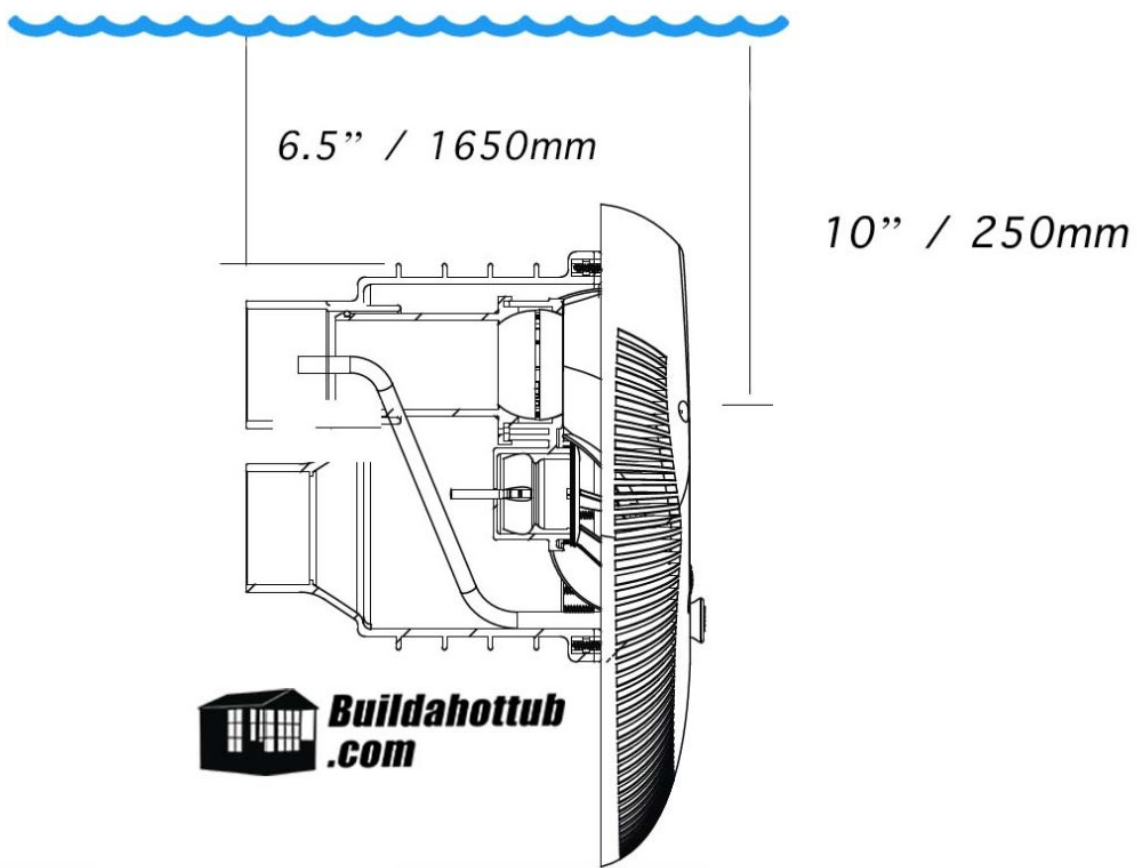
What are the Dimensions of the Swim jet?



Where do I position the Swim Jet in the Hot Tub or Pool.

Firstly, the pool or hot tub should be a minimum of 4m or 14' in length. Otherwise, there can be a wave that comes off the back wall when you are swimming and can be off putting.

Secondly, the swim jet nozzle should be 250mm or 10" below the surface. This is the same regardless of the type of construction method you are using on your pool or tub.



How do I install the Swim Jet in a Concrete / Block / Gunit / Shotcrete Pool or Tub?

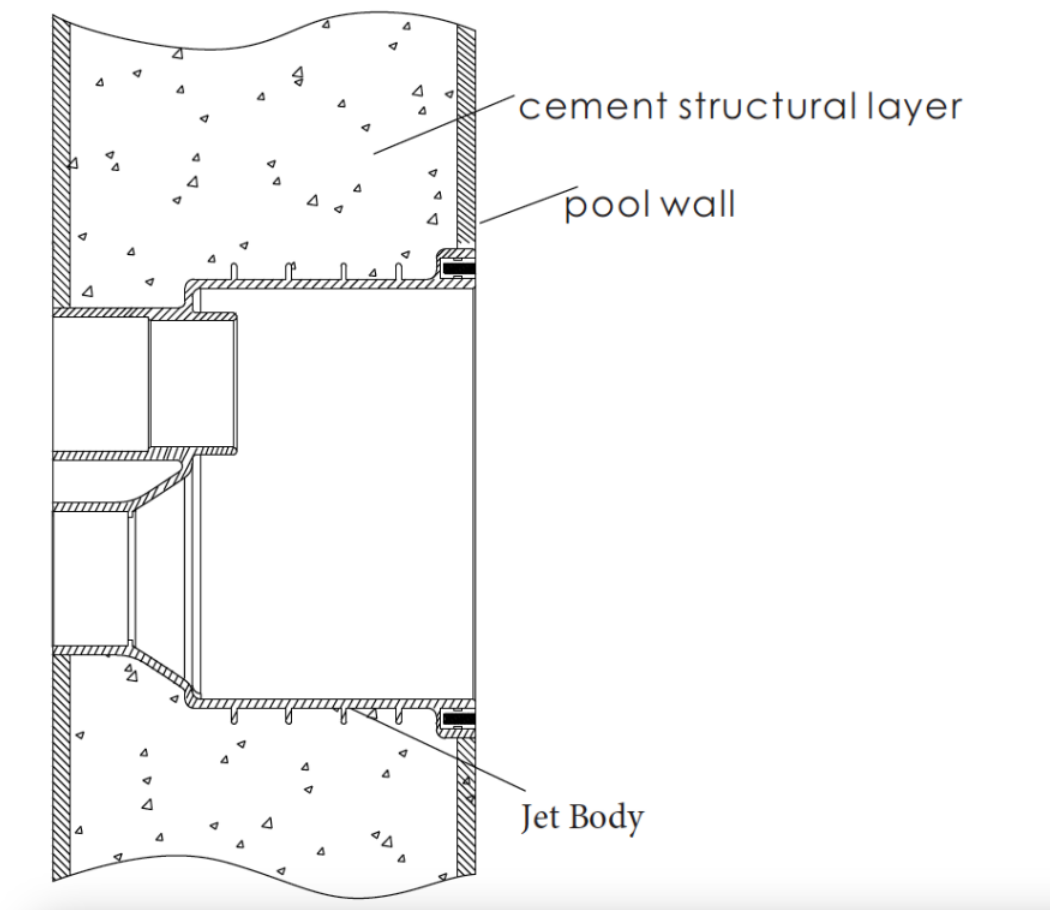
Firstly, parts 14, the face plate and the two rubber gaskets are not needed and can be discarded.

The Swimjet must be installed with the centre of the swimjet 250mm or 10" below the water line as the diagram above shows.

This means that the body of the swim jet should be 6.5" or 1650mm from the surface of the water as shown above.

The key with the installation on Concrete, Block, Gunitite or Shotcrete is that the **base** of the swim jet (Part #15) is installed so that it is flush against what will be the finished surface of the Hot Tub, Swim Spa or Pool.

Please refer to the Diagram Below.



In the case of a block build, you will need to leave an appropriate hole, fit the jet body (Part #15) and then cement around the jet body to secure it firmly in place. Make sure that the jet is sealed in and watertight so there no **leaks**.

The physical body of the jet is 260mm in diameter or 10.24", if you are looking to leave a hole you should leave 11" diameter so there is adequate space for a concrete fill and seal around the jet body.

Once the pool or tub surface has been finished with tiles, pool paint or the like, the next step is to assemble the faceplate.

Firstly, the Air Tubes (for the press buttons part #10) should be attached to the button for the light (part #3) as well as the button for the pump (part #1). Please note, you will need to remove the screw nut on the top of them in order to attach the tub. Before you attach the tub, place the screw nut onto the air tube so it can be tightened in place afterwards.

With the air tube secured on each of the buttons, slide the protective pipe covers (part #11) down the air tube to the of the tube where it meets the button. This pipe cover protects the air lines.

Next, thread the power cord for the LED Light, as well as the two air button tubes out the back of the base of the swim jet and into the conduit (part #16). You can then attach part #16 onto the base (part#15) and tighten part #17 the cable gland.

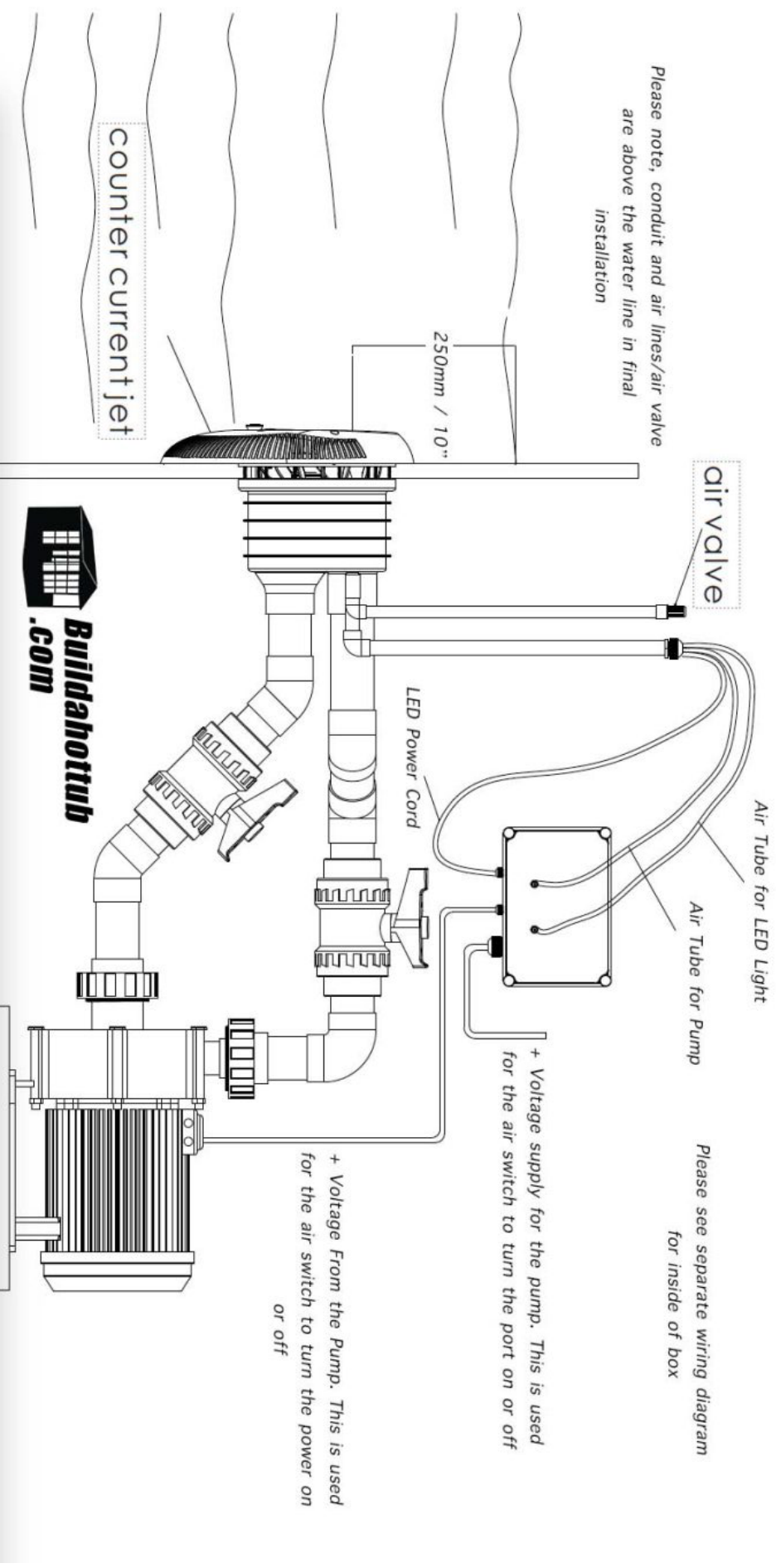
Please note, the final position for parts #16 and #18, should be above the water line as shown in the final installation diagram below.

Next, part #8, the support frame should be slid into place firmly in the base (part #15) and then screwed into place using the M6 screws (part #12)

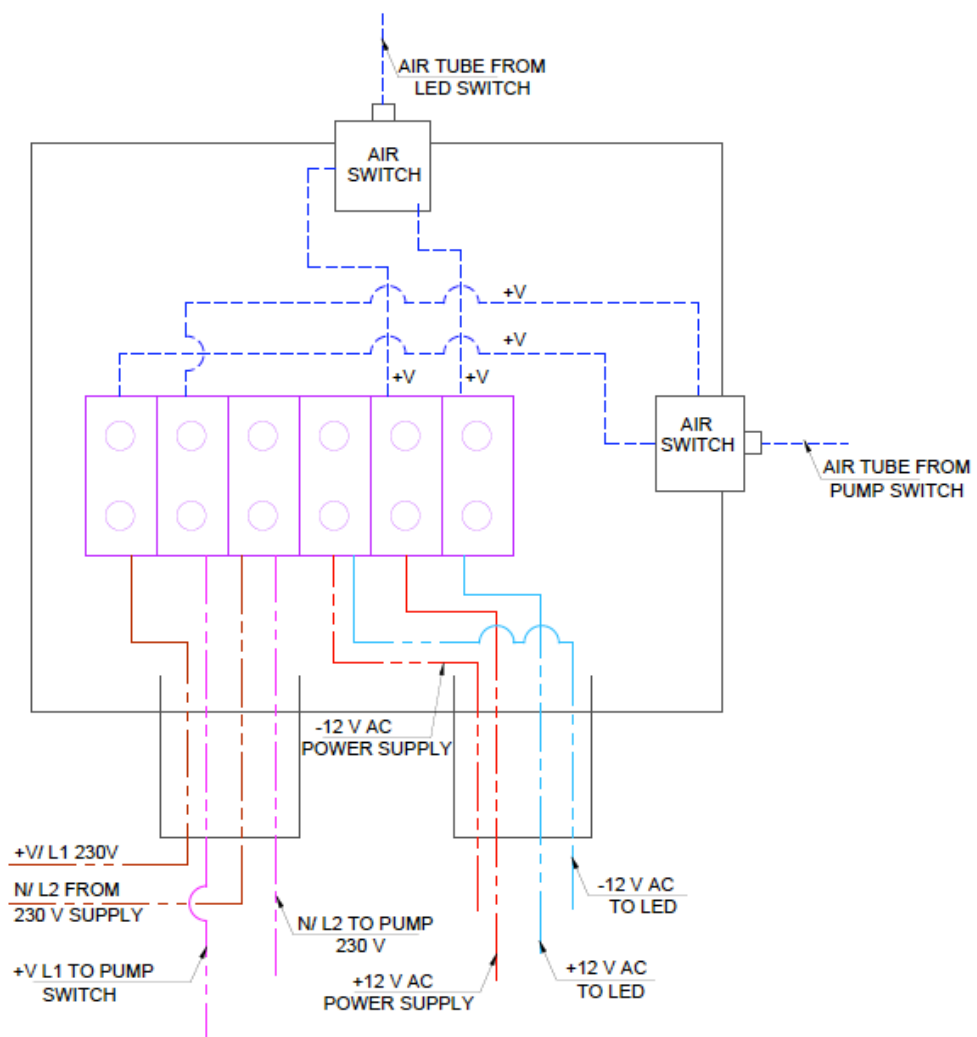
Finally, the face place (part #6) should be placed over the supporting frame (part#8) and screwed into place using the M5 screws x 4 (part#5)

Please see the separate section on how to wire the Swim jet.

Please note, conduit and air lines/air valve
are above the water line in final
installation



The Air Switch Control Box



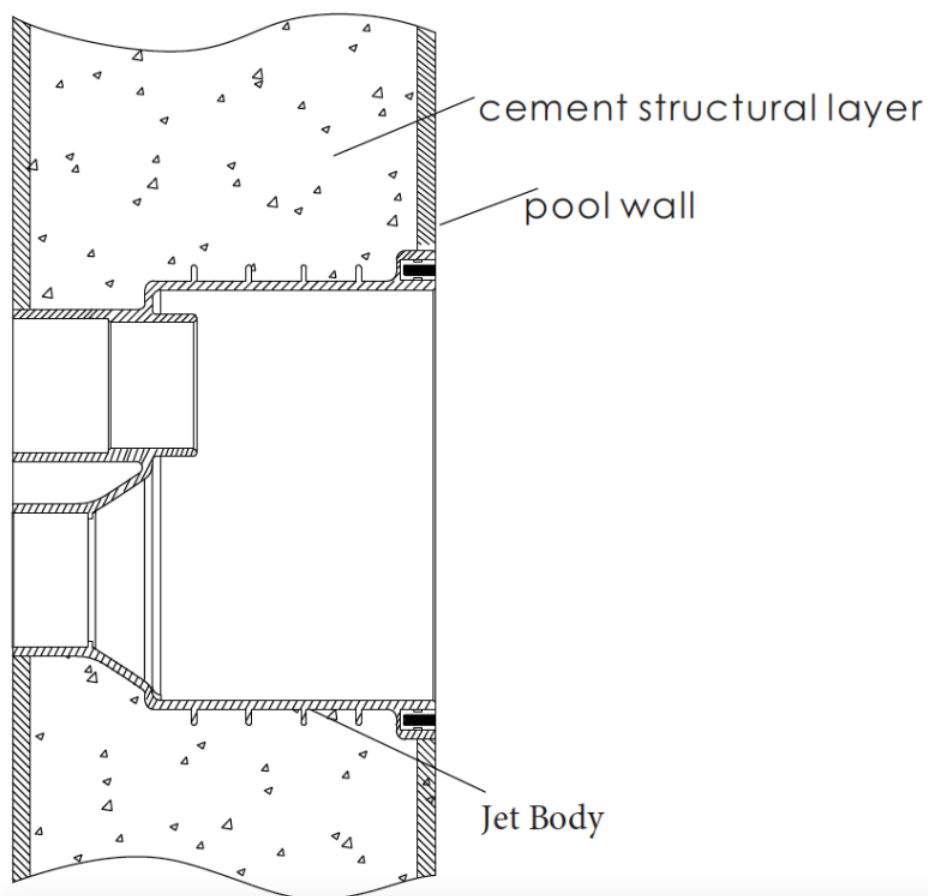
How to install the Swim Jet on a Liner Pool.

The Swimjet must be installed with the centre of the swimjet 250mm or 10" below the water line as the diagram above shows.

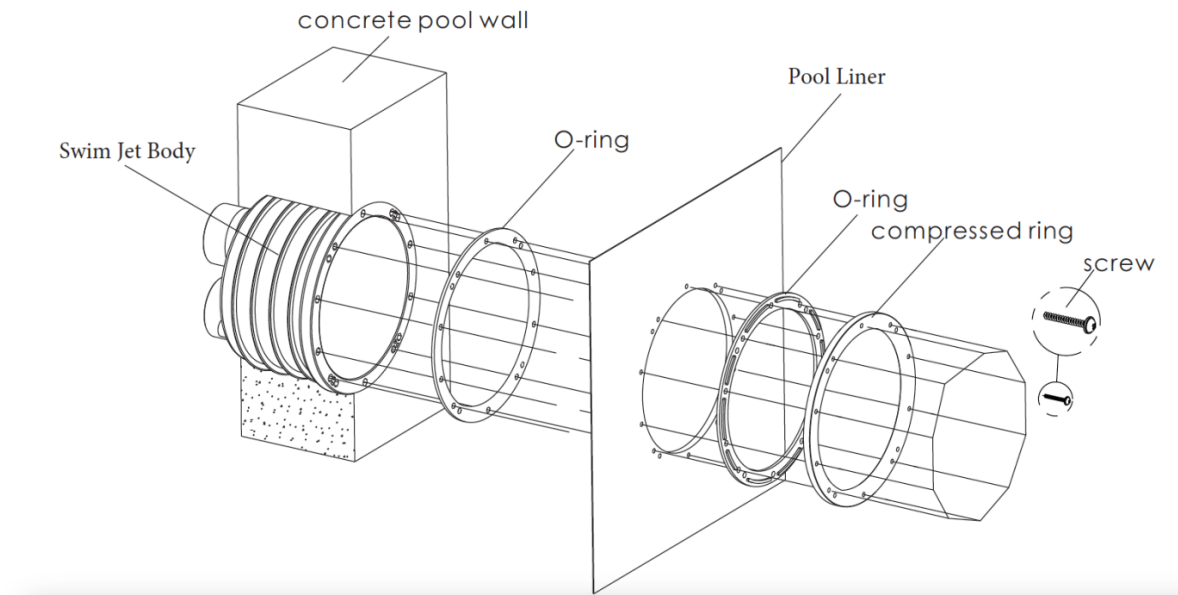
This means that the body of the swim jet should be 6.5" or 1650mm from the surface of the water as shown above.

The key with the installation is that the base of the swim jet (Part #15) is installed so that it is flush against what will be the finished surface of the Hot Tub, Swim Spa or Pool, right up to the liner.

Please refer to the Diagram Below.



Next, the 16 holes need to be cut/spiked through the liner so that the rubber gasket (O ring) (Part #14) can be placed either side of the liner as shown below.



The plastic holding ring, or compressed ring can then be screwed into place with the 16 screws. This will make a tight seal onto the liner using the O Ring Gaskets and retainers (Part #14)

Once the liner holder is in place, the next step is to assemble the faceplate.

Firstly, the Air Tubes (for the press buttons part #10) should be attached to the button for the light (part #3) as well as the button for the pump (part #1). Please note, you will need to remove the screw nut on the top of them in order to attach the tub. Before you attach the tub, place the screw nut onto the air tube so it can be tightened in place afterwards.

With the air tube secured on each of the buttons, slide the protective pipe covers (part #11) down the air tube to the end of the tube where it meets the button. This pipe cover protects the air lines.

Next, thread the power cord for the LED Light, as well as the two air button tubes out the back of the base of the swim jet and into the conduit (part #16). You can then attach part #16 onto the base (part #15) and tighten part #17 the cable gland.

Please note, the final position for parts #16 and #18, should be above the water line as shown in the final installation diagram below.

Next, part #8, the support frame should be slid into place firmly in the base (part #15) and then screwed into place using the M6 screws (part #12)

Finally, the face plate (part #6) should be placed over the supporting frame (part#8) and screwed into place using the M5 screws x 4 (part#5)

Please see the separate section on how to wire the Swim jet.

